

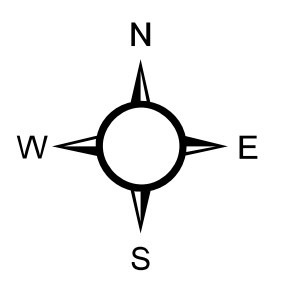
# CITY OF COLUMBIA ZONING MAP

Updated: November, 2012

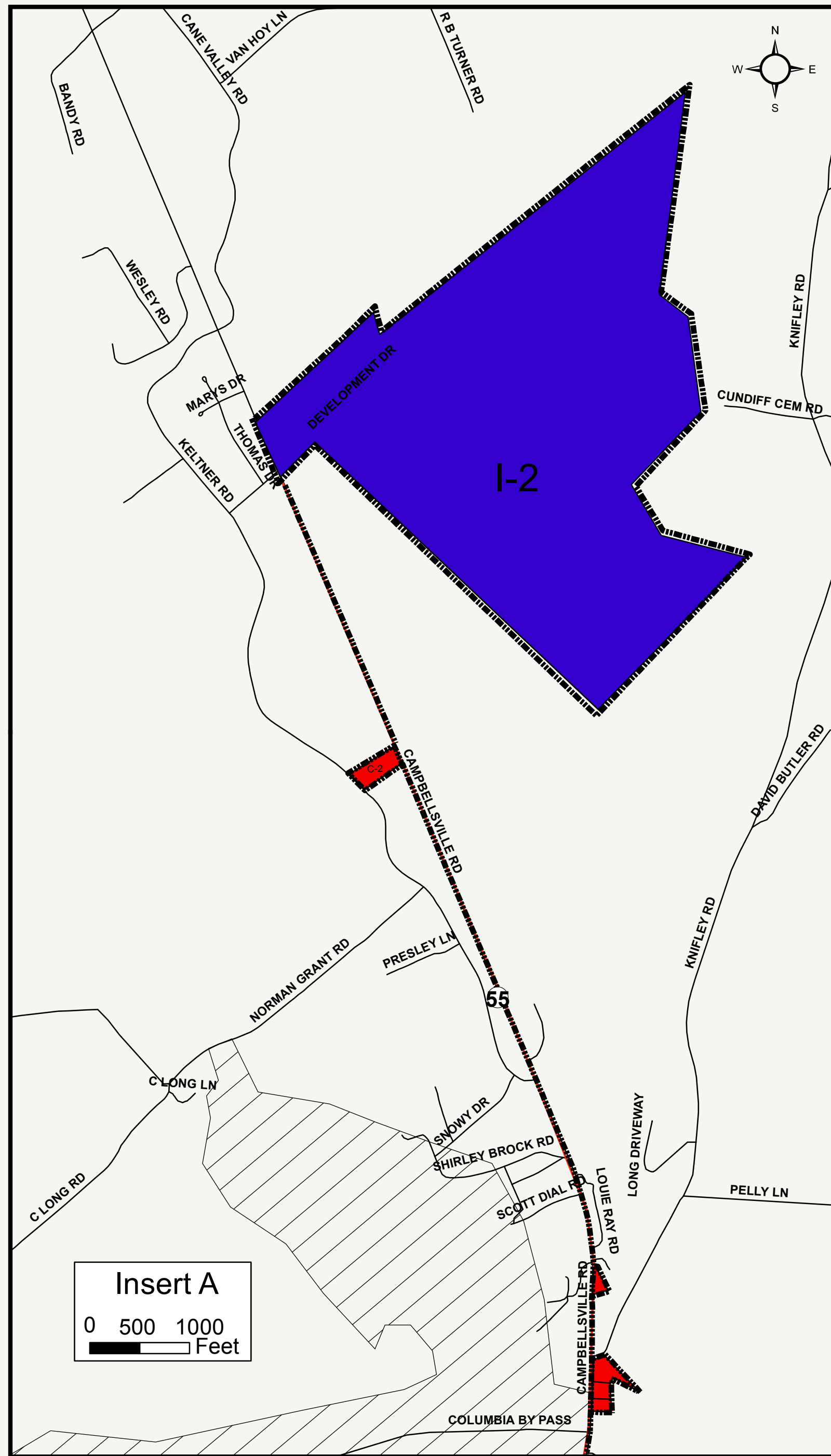
Scale and North Arrow

0 500 1,000 Feet

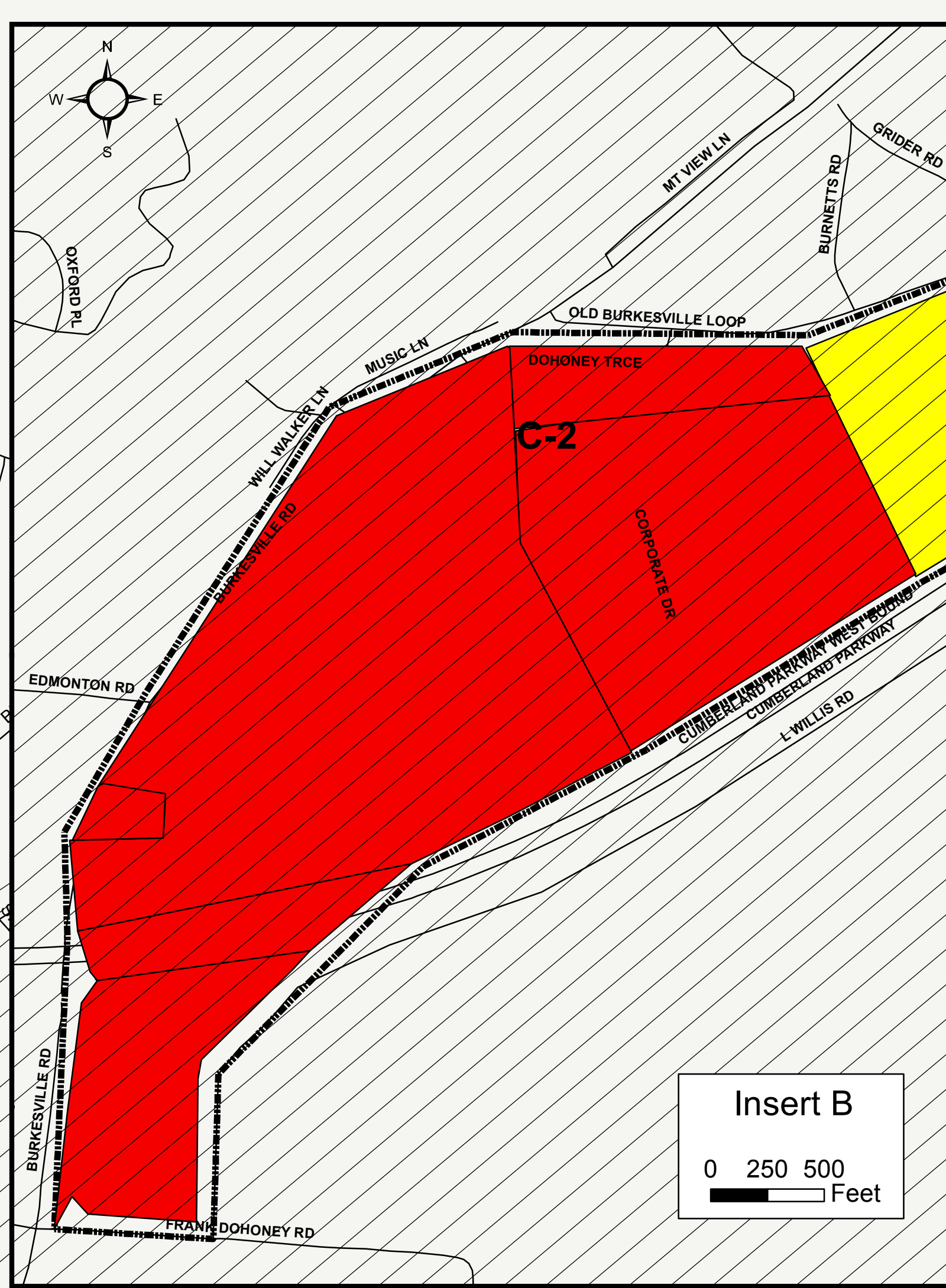
1 inch = 500 feet



See Insert A



Insert A  
0 500 1000 Feet



Insert B  
0 250 500 Feet

Date	Ordinance	Revision	Approved

**Legend**

- Columbia City Limits
- School
- KY 55 Bypass/KY 61 - Overlay District
- Roads
- Hospital

**Zoning Classifications**

<span style="background-color: #8B4513; width: 15px; height: 15px; display: inline-block;"></span> C-1	<span style="background-color: #FFFF00; width: 15px; height: 15px; display: inline-block;"></span> R-1	<span style="background-color: #800080; width: 15px; height: 15px; display: inline-block;"></span> I-1
<span style="background-color: #FF0000; width: 15px; height: 15px; display: inline-block;"></span> C-2	<span style="background-color: #90EE90; width: 15px; height: 15px; display: inline-block;"></span> R-1A	<span style="background-color: #4169E1; width: 15px; height: 15px; display: inline-block;"></span> I-2
<span style="background-color: #FFB6C1; width: 15px; height: 15px; display: inline-block;"></span> C-3	<span style="background-color: #FFD700; width: 15px; height: 15px; display: inline-block;"></span> R-2	<span style="background-color: #00BFFF; width: 15px; height: 15px; display: inline-block;"></span> P-1
	<span style="background-color: #FF8C00; width: 15px; height: 15px; display: inline-block;"></span> R-3	
	<span style="background-color: #A08080; width: 15px; height: 15px; display: inline-block;"></span> R-4	

**LEGEND**

Adair County

Kriss Lowry & Associates, Inc.  
227 South Rays Fork Road  
Corinth, KY 41010-3027  
(502) 857-2800

MAP INFORMATION  
Data Sources:  
City of Columbia  
Adair County PVA  
Adair County 911 Center  
Kentucky Revenue Department

Produced by:  
Nikita D. Moyer, November, 2012